

Программа «Cyber Science 3D»

[перейти на сайт](#) ⇒

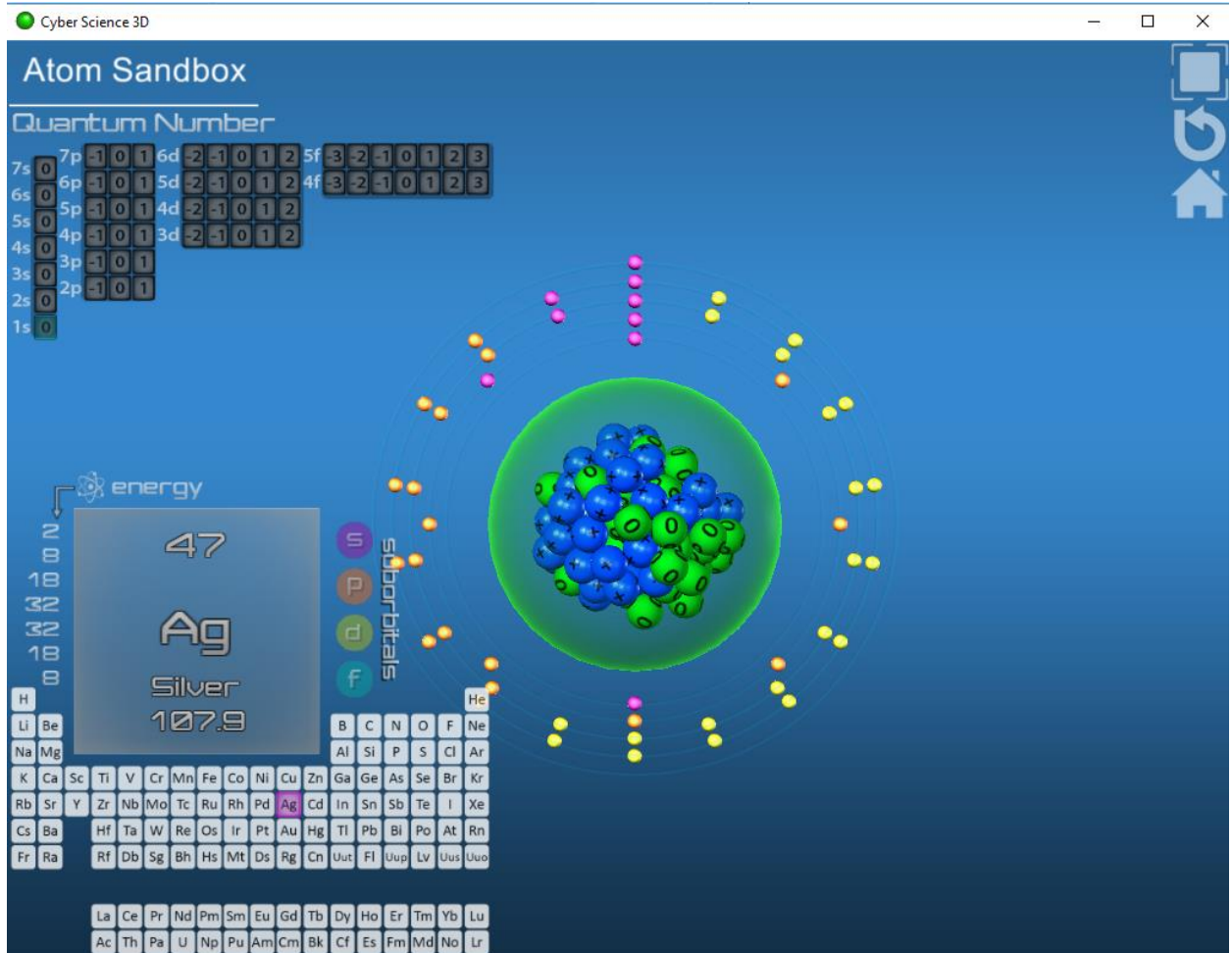
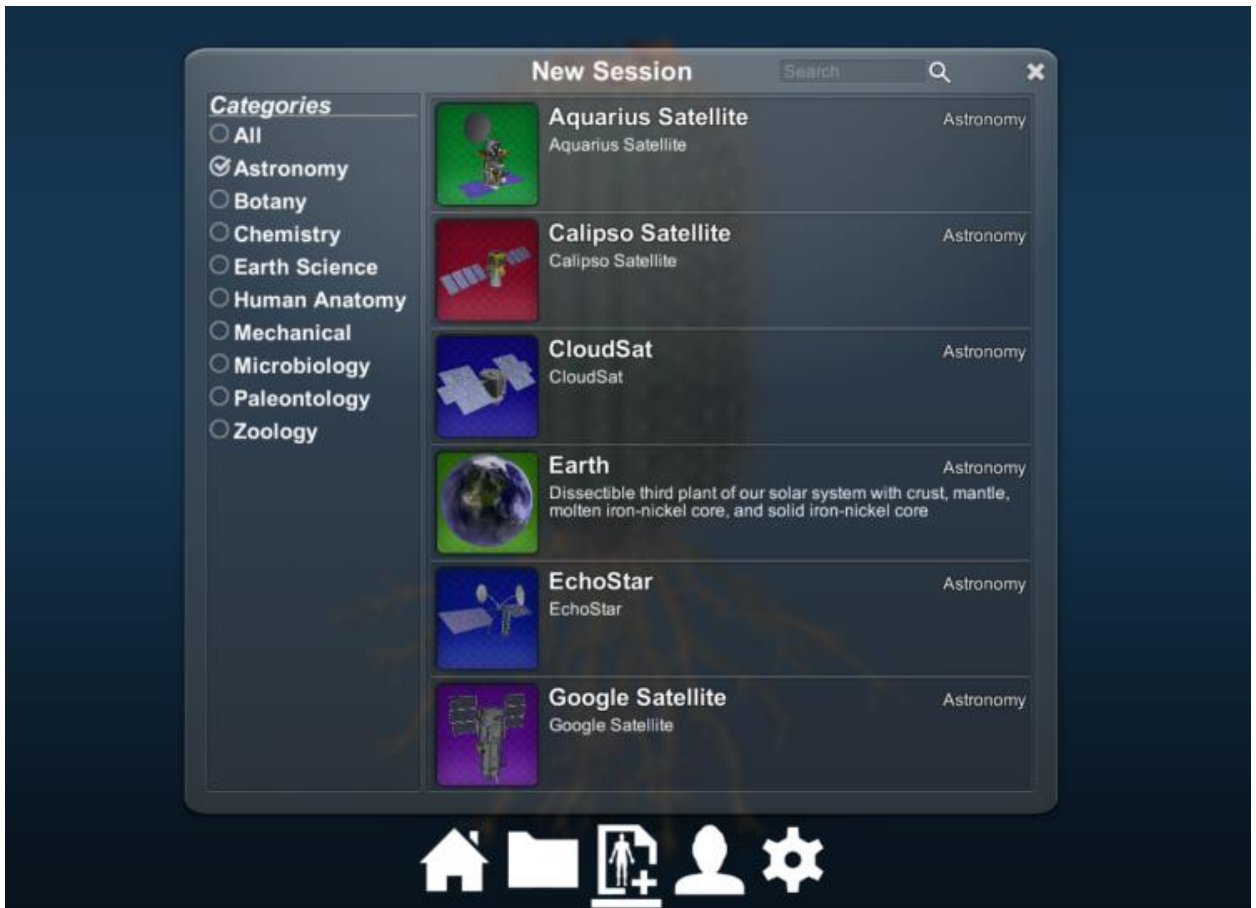
Cyber Science 3D это всеобъемлющая серия подробных, интерактивных виртуальных 3D моделей органов животных и человека, помогающих в изучении предметов естественной анатомии и биологии.

Пользователи Cyber Science 3D имеют возможность для детального изучения как внешних, так и внутренних характеристик стереоскопических моделей, кроме того, имеется возможность путешествовать по нервной или пищеварительной системам, разъединять мышцы по слоям или проникать внутрь клетки, убирать внешние оболочки для детального изучения внутренностей объекта, а также ставить собственные метки на отдельные части для более глубокого понимания объекта.


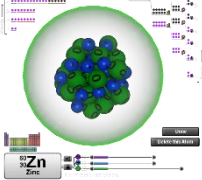
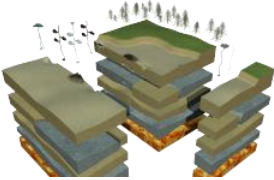

Интерактивность является важным методом обучения, так как биологические объекты очень трудно визуализировать, анатомирование животных и растений доступно не для каждого студента, невозможно исправить ошибку, начав препарацию органа заново, пластиковые сборные модели биологических объектов являются очень дорогостоящими предметами, а для подробного изучения биологического объекта, как правило, текста и картинки не достаточно.

Cyber Science 3D представляет собой всеобъемлющий пакет подробных, интерактивных виртуальных препарированных биологических объектов, помогающих в обучении и изучении предметов естественных наук.

- [Cyber Science YouTube Channel](#)
- [Cyber Science 3D for zSpace](#)
- [VIVED Science for zSpace Tutorial 1 – Home Menu](#)
- [VIVED Science for zSpace Tutorial 2 – Authoring](#)
- [VIVED Science for zSpace Tutorial 3 – Viewing](#)



**Библиотека объектов программы «Cyber Science 3D»
включает в себя следующие предметы естественных наук:**

<u>Astronomy</u>	Астрономия	<ul style="list-style-type: none"> • Sun • Mercury • Venus • Earth • Moon 	<ul style="list-style-type: none"> • Mars • Jupiter • Saturn • Uranus • NeptunePluto
<u>Botany</u>	Ботаника		<ul style="list-style-type: none"> • Cactus • Corn • Cotton • Dicot • Fern • Geranium • Ginkgo Tree • Mushroom • Orchid • Pinecone • Plant Cell • Seed • Sponge • Wheat
<u>Chemistry</u>	Химия		<ul style="list-style-type: none"> • Atom Sandbox • Molecules • Periodic Table • Quantum Shells
<u>Earth Science</u>	Наука о Земле		<ul style="list-style-type: none"> • Aquifer • Cave • Geyser • Glacier • Photosynthesis • Volcano • Water Cycle
<u>Human Anatomy</u>	Анатомия человека		<ul style="list-style-type: none"> • Alveoli • Blood Vessel • Bone Cross Section • Brain • Cervical Vertebrae • Digestive System • Ear • Egg • Eye • Eye Gross Section • Female Pelvis • Heart Human Cell • Intro Human • Lower Limb • Nephrom • Muscle Cross Section • Nerve • Nerve Cell • Ovarian Cycle • Red Blood Cell • Respiratory System • Skeleton • Skin • Skull • Sperm • Synapse • Teeth & Gums • Tooth • Upper Limb • Urinary System • Uterus

Mechanical

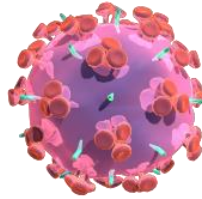
Прикладная механика



- Auto Transimission
- Bloodhound Vehicle
- Car Battery
- Car Chassis
- Car Differential
- DC Motor
- Diesel Engine
- Hydrogen Fuel Cell
- Manual Transmission
- Steam Trap
- Turbine Engine
- V8 Engine
- Wind Turbine

Microbiology

Микробиология



- Amoeba
- Bacillus
- Bird Flu Virus
- Bordetella Pertussis
- C. Botulinum
- C. Diphtheriae
- Chromosome
- Coronavirus
- DNA
- E. Phage T4
- Echovirus
- Escherichia Coli
- F. Nucleatum
- Halteria
- Helicobacter Pylori
- Herpes
- HIV
- K. Pneumoni
- Karyotype
- L. Pneumophila
- M. Tuberculosis
- Nomega Virus
- Osteocyte
- S. Epidermis
- Tapeworm

Paleontology

Палеонтология



- Allosaurus
- Diplodocus
- Human Evolution
- Mammoth
- Pterosaur
- Triceratops
- Trilobite
- T-Rex


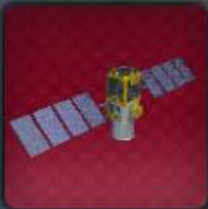






Zoology

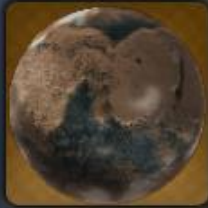
Зоология



- Adult Pig
- Butterfly
- Cat
- Cow
- Deer
- Dolphin
- Earthworm
- Fetal Pig
- Fly
- Frog
- Frog Evolution
- German Shephard
- Horse
- Jellyfish
- Kudu Skeleton
- Lobster
- Mahi Mahi
- Mosquito
- Owl Pellet
- Rat
- Rhino Beetle
- Screech Owl
- Sponge
- Starfish
- Strombus Gigas
- Tarantula
- Termite Life Cycle

Astronomy

	Aquarius Satellite Aquarius Satellite	Astronomy
	Calipso Satellite Calipso Satellite	Astronomy
	CloudSat CloudSat	Astronomy
	Earth Dissectible third planet of our solar system with crust, mantle, molten iron-nickel core, and solid iron-nickel core	Astronomy
	EchoStar EchoStar	Astronomy
	Google Satellite Google Satellite	Astronomy
	GPS Satellite GPS Satellite	Astronomy
	Jupiter Dissectible fifth planet of our solar system with layers of hydrogen and helium gas/liquid	Astronomy



Mars

Astronomy

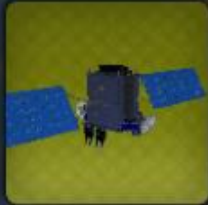
Dissectible fourth planet of our solar system with crust, mantle, and core



Mercury

Astronomy

Dissectible first planet of our solar system with silicate crust and mantle and iron core



Milstar

Astronomy

Milstar



Moon

Astronomy

Dissectible moon which orbits the Earth including the basalt mantle, basalt crust, and metallic core



Neptune

Astronomy

Dissectible eighth planet of our solar system with cloud layer, gas atmosphere, liquid layer, and frozen core



Omid Satellite

Astronomy

Omid Satellite



Pluto

Astronomy

Dissectible former planet, now planetoid of our solar system with crust, mantle, and core



Saturn

Astronomy

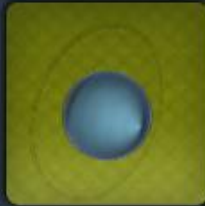
Dissectible sixth planet of our solar system with layers of hydrogen and helium gas/liquid and icy core



Sun

Astronomy

Dissectible primary star of our solar system with chromosphere, photosphere, convective zone, radiative zone, and core



Uranus

Astronomy

Dissectible seventh planet of our solar system with cloud layer, gas atmosphere, liquid layer, and frozen core



Venus

Astronomy

Dissectible second planet of our solar system with silicate crust, mantle, and iron/nickel core layers

Botany



Cactus

Botany

Dissectible barrel cactus with layered tissues, flowers, fruit, spines, and roots



Corn Kernel

Botany

Dissectible corn seed with pericarp, aleurone, endosperm, germ, and tip cap



Corn Seedling

Botany

Dissectible young corn plant with kernel, mesocotyl, coleoptiles, whorl, leaves, and nodal and seminal roots



Corn Stalk

Botany

Dissectible adult corn plant with stalk, tassels, husks, and corncobs with individual dissectible kernel



Cotton

Botany

Dissectible cotton leaf including a stem, leaf, and boll



Dicot

Botany

Dissectible flower with petals, stem, filaments, style, and reproductive system



Fern

Botany

Dissectible fern with root system and dissectible leaves



Geranium

Botany

Dissectible geranium including root system, petals, carpals, calyx, blades, buds, and more



Ginkgo leaf

Botany

Dissection of a Ginkgo leaf with Petiole, leaf cross section, veins, and blad lobes



Ginkgo Leaf Cross Section

Botany

Dissectible microscopic cross section of ginkgo leaf that includes, cuticle, dermis, and palisade and spongy mesophyll



Ginkgo Tree

Botany

Ginkgo tree with dissectible root system, branches, trunk, and leaves



Mushroom

Botany

Dissectible amanita muscaria fungus with cap, gills, stem, annulus



Orchid

Botany

Dissectible orchid with petals, sepals, leaves, stem, roots, labellum, anther cap, column, stigma, and ovary



Pine Cone

Botany

Dissectible pine cone with scales and peduncle



Plant Cell

Botany

Dissectible cubic plant cell with cell membrane, wall, and plasm, and dissectible organelles



Seed

Botany

Dissectible bean seed with testa, cotyledon, epicotyle, hypocotyl, and germ with animation of seedling growth



Wheat

Botany

Dissectible wheat model including beards, glumes, kernels, leaves, pleas, and rachis

Chemistry



Acetaminophen

Chemistry

Ball and stick diagram of a pain killer



Acetylsalicylic Acid

Chemistry

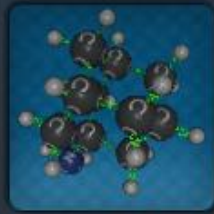
Ball and stick diagram of aspirin



Adrenaline

Ball and stick diagram of adrenaline

Chemistry



Amanthadine

Ball and stick diagram of amantadine

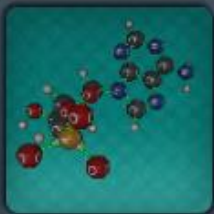
Chemistry



Ammonia

Ball and stick diagram of ammonia

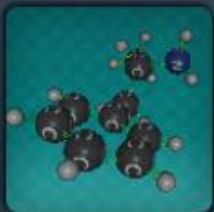
Chemistry



AMP

Ball and stick diagram of adenosine monophosphate

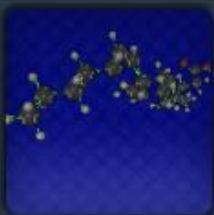
Chemistry



Amphetamine

Ball and stick dissection of amphetamine

Chemistry



Arachidonic

Ball and stick diagram of arachidonic

Chemistry



ATP

Ball and stick diagram of adenosine triphosphate

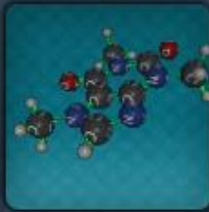
Chemistry



AZT

Ball and stick diagram of azidothymidine

Chemistry



Caffeine

Ball and stick diagram of caffeine

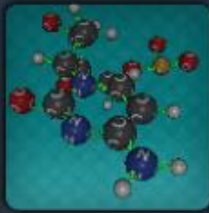
Chemistry



Carbonic Acid

Ball and stick diagram of carbonic acid

Chemistry



Cytidine

Ball and stick diagram of cytidine

Chemistry



D-Glucose

Ball and stick diagram of d-glucose

Chemistry



DLPE

Ball and stick diagram of phosphatidylethanolamine

Chemistry



D-Mannose

Ball and stick diagram of d-mannose

Chemistry



DPPC

Ball and stick diagram of colosceril palmitate

Chemistry



D-Xylose

Ball and stick diagram of d-xylose

Chemistry



Fructose

Ball and stick dissection of a fruit sugar fructose

Chemistry



GDP

Ball and stick diagram of guanosine diphosphate

Chemistry



H₂O

Ball and stick diagram of a water molecule

Chemistry



Linoleic Acid

Ball and stick dissection of linoleic

Chemistry



LSD

Ball and stick diagram of lysergic acid diethylamide

Chemistry



Oleic Acid

Ball and stick diagram of oleic acid

Chemistry



Palmitic Acid

Ball and stick diagram of palmitic

Chemistry



Penicillin

Ball and stick dissection of penicillin

Chemistry



Penicillin

Ball and stick dissection of penicillin

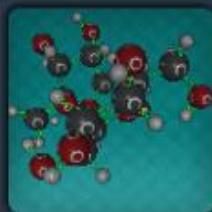
Chemistry



Stearic Acid

Ball and stick dissection of stearic acid

Chemistry



Sucrose

Ball and stick diagram of the sugar sucrose

Chemistry



THC

Ball and stick diagram of tetrahydrocannabinol

Chemistry



VX

Ball and stick diagram of a lethal nerve agent

Chemistry



Zolpidem Tartrate

Ball and stick diagram of a sleep aid

Chemistry

Earth Science



Aquifer

Earth Science

Underground layer of water-bearing permeable rock with wells and piezometric surface



Cave

Earth Science

Dissectible cave network that includes many different rock formations



Geyser

Earth Science

Dissectible geyser with rock layers, magma, hot spring, mud pot, sinter, and fumaroles



Glacier

Earth Science

Dissectible glacier that includes zones of accumulation and ablation, kettle lakes, and outwash plain



Photosynthesis

Earth Science

Dissectible plant model with photosynthesis simulation with oxygen, carbon dioxide, nutrients, and water representations



Tectonic Plates

Earth Science

Tectonic Plates



Volcano

Earth Science

Dissectible composite volcano that includes ash cloud, magma chamber and conduit, lava fountain and bombs



Water cycle

Earth Science

Dissectible Water Cycle featuring each phase of the process

Human Anatomy



Alveoli

Human Anatomy

Dissectible alveolus with alveolar sacs and capillary beds



Blood Vessel

Human Anatomy

Dissectible blood vessel with red blood cells, lymphocytes, phagocytes, and auxiliary cells



Bone Cross Section

Human Anatomy

Dissectible femur that includes the layers of the bone down to lamella and osteon



Brain

Human Anatomy

Dissectible brain including the lobes and midbrain



Cervical Vertebrae

Human Anatomy

Dissectible region of the spine including atlas, ligaments, disc, and spinal cord



Ear

Human Anatomy

Dissectible detailed human ear that includes the incus, malleus, and stapes bones and surrounding tissue and vessels



Eye

Human Anatomy

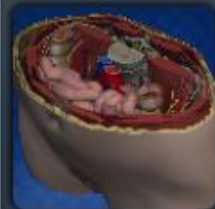
Dissectible eye that includes layers of the retina and lens, optic nerve, and muscles



Eye Cross Section

Human Anatomy

Dissectible microscopic cross section of the retina including rods, cones, cones, and other cells



Female Pelvis

Human Anatomy

Dissectible female pelvis region including fat, muscles, skeleton, and reproductive system



Female Reproductive

Human Anatomy

Dissectible female reproductive system with surrounding skeleton, nervous, and circulatory system



Human Digestive

Human Anatomy

Dissectible detailed human digestive system including layers of stomach and intestines, liver, gallbladder, and pancreases



Human Heart

Human Anatomy

Dissectible heart with the four chambers and aortic arch, vena cava, abdominal aorta, subclavian, and brachiocephalic vessels



Human Respiratory

Human Anatomy

Dissectible human lungs with encasing tissue, trachea, and bronchial tree



Human Skeleton

Human Anatomy

Dissectible skeleton with all 209 bones of the human body with ligaments



Human Skull

Human Anatomy

Dissectible skull with occipital, temporal, parietal, sphenoid, ethmoid, frontal, nasal, lacrimal, maxilla, zygomatic, and mandible bones



Human Uterus

Human Anatomy

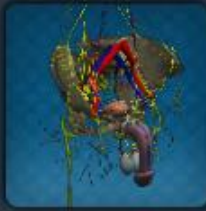
Dissectible human uterus featuring the ovaries, vaginal tube, perimetrium, myometrium, fallopian tube, endometrium and cervix



Lower Limb

Human Anatomy

Dissectible human right leg with muscular, skeletal, and nervous systems



Male Reproductive

Human Anatomy

Dissectible male reproductive system with surrounding skeletal, nervous, and circulatory system



Muscle Cross Section

Human Anatomy

Dissectible bicep on skeleton with muscle layers from epimysium to myofibril



Nephron

Human Anatomy

Dissectible renal nephron with tubule and arterial and venous vessels



Osteocyte

Human Anatomy

Dissectible bone cell that includes the adjoined osteocytes and organelles encased in bone



Ovarian Cycle

Human Anatomy

Dissectible ovary with the different stages of egg development



Red Blood Cell

Human Anatomy

Dissectible red blood cell with membrane and hemoglobin



Skin

Human Anatomy

Dissectible cross section of human skin that includes the layers of the epidermis, dermis, and hypodermis, sweat, hair, nerves, and vessels



Synapse

Human Anatomy

Dissectible microscopic neuronal junction with synaptic gap between axon and dendrite, neurotransmitters, transporters, mitochondria, and vesicles



Teeth and Gums

Human Anatomy

Dissectible adult human dental model with all 32 teeth with surrounding tissue



Tooth

Human Anatomy

Dissectible cross section of a tooth with alveolar bone, gingiva, enamel, dentin, odontoblast, pulp, cementum, and periodontal ligament



Upper Limb

Human Anatomy

Dissectible human right arm with muscular, skeletal, and nervous systems



Urinary System

Human Anatomy

Dissectible human urinary system with surrounding skeletal structure

Mechanical



1100cc V-Twin

Mechanical

V-Twin motorcycle engine with transmission and Desmodromic valve system



4 Cylinder Airplane Engine

Mechanical

Engine commonly used in light aircraft, modeled after a Rotax



4 Cylinder Boxer

Mechanical

Boxer engine with exposed Rockers and Pushrods



5L V8

Mechanical

Simple pushrod V8 engine



AC Motor

Mechanical

Animated alternating current electric motor with controllable rate of rotations



Alternator

Mechanical

Animated alternator with controllable rotations per minute to convert mechanical energy into electrical energy commonly used in automobiles



Angle Valve

Mechanical

Animated angle valve with controllable flow where the inlet and outlet ports are aligned at a 90 degree angle with respect to each other



Beetle Engine

Mechanical

1960's air cooled boxer-4



Beveled Gear

Mechanical

Animated straight beveled gear with controllable power input and measured power output



Bloodhound

Mechanical

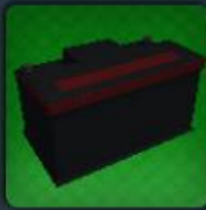
Dissectible car that was built to break the land speed record



Brushless DC Motor

Mechanical

Animated synchronous motor powered by a direct current source with controllable rate of rotations of the permanent internal magnet



Car Battery

Mechanical

Dissectible car battery with casing, handle, caps, and positive and negative plates and bridges



Car Chassis

Mechanical

Dissectible car chassis that includes detailed frame suspension, and engine components



Clock

Mechanical

Animated clock with controllable speed at which the weight's energy is released by the escapement mechanism



Clutch

Mechanical

An interactive models demonstrating a clutch.



DC Motor

Mechanical

Animated brushed direct current electric motor with controllable rotation speed of the armature inside the stationary magnet



Dependent Suspension

Mechanical

Animated oldest and simplest suspension with controllable flex commonly found on the rear axle of large commercial vehicles



Diesel engine

Mechanical

Detailed diesel engine featuring a dissectible engine block, piston assembly, drive train, and turbos



Disc Brake

Mechanical

Animated disc brake assembly with controllable friction to slow speed of rotation



Dnepr Engine

Mechanical

Engine modeled after a Ukrainian motorcycle engine from the 60's



DOHC V8

Mechanical

Oppenens Digi



Double Wishbone Suspension

Mechanical

Animated independent suspension with two A-arms with controllable flex and steering



Four Stroke Engine

Mechanical

Animated internal combustion engine with a single four stroke cylinder with controllable speed



Fuel Cell

Mechanical

Dissectible Hydrogen fuel cell that includes aluminum end plate, anode plate and lead, cathode plate and lead, O and H flow fields, and particle exchange membranes



Fuel Injected V10

Mechanical

High output V10 engine.



Gearbox and Motor

Mechanical

Animated high torque output electric motor and gearbox with controllable power input and measured output



Helical Gears

Mechanical

Animated angle toothed gears which allow for smooth and quiet engagement with controllable input and measured output



Hydraulic Cylinder

Mechanical

Animated hydraulic cylinder with controllable piston displacement



Inline 4

Mechanical

Turbocharged DOHC inline 4 engine



Manual Transmission

Mechanical

Animated automobile manual transmission with controllable power input and measured output within neutral, first through fifth gears, and reverse



Planetary Gearbox

Mechanical

Animated planetary gearbox with controllable rate of rotations commonly found in an automatic transmission



Rack and Pinion

Mechanical

Animated rack and pinion with moveable gear rack which is used for vehicle steering



Reduction Gearbox

Mechanical

Animated reduction gearbox with controllable power input and measured high and low output power



Saturn V

Mechanical

Saturn V



Sequential Transmission

[Mechanical](#)

Animated manual transaxle with controllable power input and measured output within neutral, first through sixth gears, and reverse



Simple Inline 4

[Mechanical](#)

Inline 4 engine pared down to just the essentials



Single Cylinder 2 Stroke

[Mechanical](#)

2-stroke single cylinder engine used in RC cars and other model vehicles



Steam Engine

[Mechanical](#)

Animated double-acting steam engine with controllable speed



Steam Trap

[Mechanical](#)

Dissectible steam trap featuring valve, trap, gasket, gate, fuffer, chamber, bolts and more



Straight 8 Engine

[Mechanical](#)

Inline 8 Cylinder engine used in race cars and premium cars until the 50's



Torsen Differential

[Mechanical](#)

Animated torsen differential with controllable power input and torque bias and measured output



Turbine Engine

[Mechanical](#)

Animated turbine engine with controllable thrust commonly used on jet aircrafts



Turbo

Mechanical

Animated twin scroll turbo charger used to increase the horsepower in a engine with controllable rate of rotation



Two Speed Gearbox

Mechanical

Animated two speed gearbox with controllable power input and measured output within neutral, first gear, and second gear



Two Stroke Engine

Mechanical

Animated two stroke cross flow engine with controllable rotations per minute



Univerasal Joint

Mechanical

Animated universal joint with controllable flex and rate of rotation



V2 Engine

Mechanical

Very detailed animated V Twin engine



V8 engine

Mechanical

Dissectible V8 engine which includes detailed engine block, distributor, carburetor, cam shaft, and more



W16 Engine

Mechanical

The W16 is essentially two V8's attached to one crankshaft. It is currently used in one of the fastest production cars in the world.



Water Pump

Mechanical

Animated centrifugal water pump, commonly used in water and sewage transportation, with controllable flow



Wind Turbine

Mechanical

Dissectible wind turbine set on terrain that includes tower and engine components



Worm Gear

Mechanical

Animated worm drive with controllable power input and measured output of high torque and low speed



Wright Flyer

Mechanical

First successful heavier-than-air powered aircraft. It was designed and built by the Wright brothers.

Microbiology



Amoeba

Microbiology

Dissectible amoeba including membranes, vacuoles, endoplasm, and ectoplasm



Arenavirus

Microbiology

Arenavirus



Bacillus

Microbiology

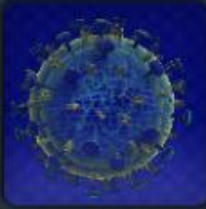
Dissectible generalized genus bacteria including cell membrane/wall, plasm, pili, flagellum, and organelles



Bacillus Subtilis

Microbiology

Bacillus Subtilis



Bird Flu Virus

Microbiology

Dissectible H5N1 virus with protein matrix, viral envelope, proteins, RNA, and hemagglutinin



Blue Tongue Virus

Microbiology

Blue Tongue Virus



Bordetella Pertussis

Microbiology

Dissectible whooping cough virus including membranes, surface proteins, and organelles



Borrelia Burgdorferi

Microbiology

Borrelia Burgdorferi



Cell Wall

Microbiology

Dissectible lipid bilayer with phospholipids and channel, alpha helix, receptor, surface, and transport proteins



Chlamydia

Microbiology

Chlamydia



Chromosome

Microbiology

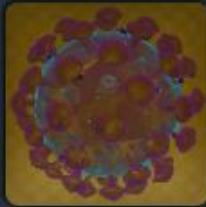
Dissectible basic chromosome with labeled q and p arms, chromatin, and centromere



Clostridium Botulinum

Microbiology

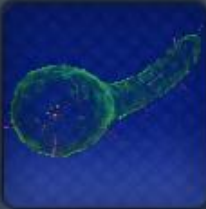
Dissectible bacteria that causes botulism that includes glycocalyx, organelles, and plasmid



Coronavirus

Microbiology

Dissectible virus with membrane, protein capsid, glycoproteins, and RNA



Corynebacterium Diphtheriae

Microbiology

Dissectible bacteria that causes diphtheria that includes membranes organelles, and plasmids



DNA

Microbiology

Dissectible double helix ball and stick diagram of deoxyribonucleic acid



Echovirus

Microbiology

Dissectible Enteric Cytopathic Human Orphan virus with receptors, polypeptides, and RNA



Enterobacteria Phage T4

Microbiology

Dissectible bacteriophage that infects E. coli bacteria with capsid head, RNA, collar and tail, sheath, base plate, and tail fibers and pins



Escherichia Coli

Microbiology

Dissectible e. coli bacteria that includes membranes, flagellums, and organelles



Fusobacterium Nucleatum

Microbiology

Dissectible oral bacteria found in dental plaque including DNA, membranes, and organelles



Giardia

Microbiology

Dissectible Giardia



Fusobacterium Nucleatum

Microbiology

Dissectible oral bacteria found in dental plaque including DNA, membranes, and organelles



Giardia

Microbiology

Dissectible Giardia



Halteria

Microbiology

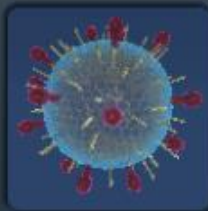
Dissectible Halteria with body, cirri, and granules



Helicobacter Pylori

Microbiology

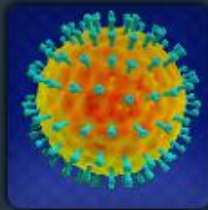
Dissectible bacteria found in the stomach that includes membranes, organelles, and flagellums



Hendra Virus

Microbiology

Hendra Virus



Herpes

Microbiology

Dissectible human herpes virus that includes lipid membrane, viral envelope, protein matrix, capsid, and RNA



HIV

Microbiology

Dissectible Human Immunodeficiency Virus that includes lipid membrane, viral envelope, protein matrix, capsid, and RNA



Human Cell

Microbiology

Dissectible human cell featuring vacuoles, ERs, plasma membrane, peroxisomes, nucleus, microtubules, mitochondria, and more



Human Egg

Microbiology



Human Egg

Microbiology

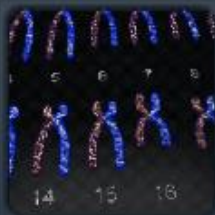
Dissectible human egg with corona radiata, zona pellucida, mitochondria, polar body, and nucleus



Human Sperm

Microbiology

Dissectible male sex cell with flagellum, head, midsection, mitochondria, microtubules, and nucleus



Karyotype

Microbiology

Dissectible karyotype with 22 regular chromosomes and both sex chromosomes



Klebsiella Pneumoni

Microbiology

Dissectible bacteria which can cause pneumonia that includes membrane layers, surface proteins, pilus and other organelles



Legionella Pneumophila

Microbiology

Dissection of a legionella pneumophila featuring proteins, ribosomes, receptors, plasmid, pilus, membranes and more



Marburg Virus

Microbiology

Marburg Virus



Measles Virus

Microbiology

Measles Virus



Mengo Virus

Microbiology

Mengo Virus



Meningococcus

Meningococcus

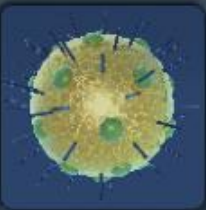
Microbiology



Mycobacterium Tuberculosis

Dissectible bacteria which causes tuberculosis with cell wall, proteins, plasmid, inclusion body, and chromosome

Microbiology



Myxovirus

Myxovirus

Microbiology



Neisseria Gonorrhoeae

Neisseria Gonorrhoeae

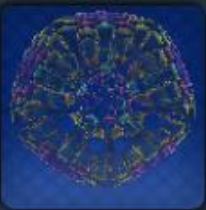
Microbiology



Nerve

Dissectible chain of neurons with cell bodies, myelin sheaths, and axon

Microbiology



Nudaurelia Capensis Omega Virus

Dissectible NomegaV with viral envelope, envelope proteins, capsid proteins, and RNA

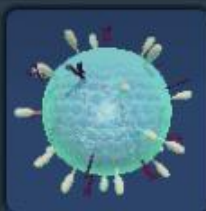
Microbiology



Oenococcus Oeni

Oenococcus Oeni

Microbiology



Parainfluenza Virus

Parainfluenza Virus

Microbiology



Paramyxovirus

Paramyxovirus

Microbiology



Pneumocystis Jiroveci Fungus

Pneumocystis Jiroveci Fungus

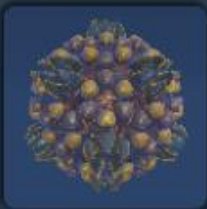
Microbiology



Rabies virus

Dissection of the rabies virus including RNA, lipoprotein envelope, and glycoprotein

Microbiology



Reovirus

Reovirus

Microbiology



Staphylococcus Epidermis

Dissectible gram-positive, coccal bacteria found in skin including envelope chain, secretions, and chromosomes

Microbiology



Tapeworm

Dissectible parasite with detailed Scolex and proglottid with reproduction system and full body

Microbiology



Thogotovirus

Thogotovirus

Microbiology

Paleontology



Allosaurus

Dissectible allosaurus with skeleton and skin

Paleontology



Diplodocus

Dissectible diplodocus with skeleton and skin

Paleontology



Human Evolution

Dissectible skeletons of australopithecus, homo erectus, and homo sapien

Paleontology



Pterosaur

Dissectible pterosaur with skeleton and skin

Paleontology



Skull Fossils

Skulls of Australopithecus, Homo erectus, and Homo sapiens, and two fossils of skull fragments.

Paleontology



Triceratops

Dissectible triceratops with skeleton and skin

Paleontology



Trilobite

Dissectible detailed trilobite initial set as fossil that includes detailed exoskeleton

Paleontology



Tyrannosaurus Rex

Dissectible t-rex with skeleton and skin and animated walk and roar

Paleontology

Zoology



Deer

Zoology

Dissectible doe with detailed skin, skeleton, and internal organs



Diamondback Rattlesnake

Zoology

Dissectible rattlesnake including respiratory, digestive, circulatory, skeletal, and muscular systems along with the skin and rattle



Dolphin

Zoology

Dissectible dolphin with skeleton and skin



Earthworm

Zoology

Dissectible earthworm that includes crop, gizzard, nephria, and five chamber heart



Beluga Whale

Zoology

Beluga Whale



Cat

Zoology

Dissectible cat with detailed internal organs, skeletal, and muscular systems



Chicken Egg

Zoology

Dissectible chicken egg featuring the yolk, outer membrane, and egg shell



Cow

Zoology

Dissectible adult cow that includes muscular, skeletal, and internal organ systems



Dalmatian

Dalmatian

Zoology



Fetal Pig

Dissectible fetal pig with skin, muscular, skeletal, nervous, and internal organ systems

Zoology



Fly

Dissectible fly with detailed external head, thorax, abdomen, and no internal anatomy

Zoology



Frog

Dissectible adult frog that includes detailed muscles, internal organ systems, and skeleton

Zoology



Frog Evolution

Non-dissectible frog life cycle with five stages

Zoology



German Shephard

A dissectible german shephard

Zoology



Horse

Dissectible horse with detailed skin, skeleton, and internal organs

Zoology



Jellyfish

Dissectible jellyfish with bell, coelenteron, velarium, tentacle, pedalium, gonad, rhopalium, and oral arm

Zoology



Kudu Skeleton

Zoology

Dissectible detailed kudu skeleton



Lobster

Zoology

Dissectible lobster with detailed external anatomy and simplified internal systems



Mahi Mahi

Zoology

Dissectible mahi mahi fish with detailed skin, skeleton, and internal organs



Monarch Butterfly

Zoology

Dissectible adult monarch butterfly with detailed exterior features and simplified organ systems



Monarch Caterpillar

Zoology

Dissectible monarch caterpillar with detailed exterior features and simplified organ systems



Monarch Eggs

Zoology

Non-dissectible three monarch eggs on milkweed



Mosquito

Zoology

Dissectible mosquito with detailed external head, thorax, abdomen, and no internal anatomy



Owl Pellet

Zoology

Dissectible regurgitated pellet from an owl containing a mouse skeleton



Pig

Zoology

Dissectible adult pig with detailed skin, skeleton, and internal organs



Pigeon

Zoology

Pigeon



Rabbit

Zoology

Rabbit



Rat

Zoology

Dissectible adult female rat with detailed skin, skeleton, and internal organs



Rhinoceros Beetle

Zoology

Dissectible female rhino beetle with detailed external anatomy and simplified internal systems



Screech Owl

Zoology

Dissectible screech owl with detailed skin, skeleton, and internal organs



Sponge

Zoology

Dissectible barrel sponge with pinacoderm, mesohyl, choanoderm, and porocytes



Sponge Cross Section

Zoology

Dissectible microscopic cross section of barrel sponge with pinacoderm, mesohyl, cell, amoebocyte, spicule, porocyte, and choanocyte flagellum



Starfish

Zoology

Dissectible starfish that includes pyloric ducts, gonad sets, radial canals, ampullae, Tiedemann's body, and digestive system



Strombus Gigas

Zoology

Dissectible conch snail that includes shell, columnar muscle, mantle, body, and internal organ systems



Tarantula

Zoology

Dissectible tarantula with detailed exterior, and simplified muscles and internal organs



Termite Life

Zoology

Non-dissectible termite life cycle with seven stages